



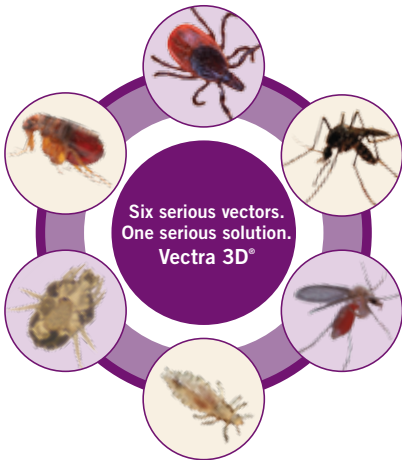
**There's a name for dogs
without fast-acting protection
from hungry parasites.**

Vectra 
3D[®]

Please don't feed the parasites.

More vectors mean increased risk of serious diseases.

Parasites that transmit disease are also called vectors. When an infected vector, such as a flea or tick, bites your dog, it could make your dog very sick. Your dog's risk of contracting vector-borne disease is increasing as vector populations continue to grow and spread, due to changes in climate, lifestyles and suburbanization. To protect your dog, ask your veterinarian about Vectra 3D®. Monthly application throughout the year can protect your dog against six serious vectors and the diseases they may carry.



Vectra 3D[®] provides the broad protection your dog needs.

No matter where you live, vectors may infect your dog. It only takes one bite. That's why you need the 6-way protection Vectra 3D provides.

Fast-Acting

- ▼ Kills on contact; parasites don't have to bite to die.
- ▼ Starts killing fleas within 2 hours.¹

Complete

- ▼ Repels and kills fleas, ticks, mosquitoes, lice, mites and sand flies.
- ▼ Repellent action can reduce the risk of vectors spreading disease to your dog.
- ▼ Kills adult fleas and controls all immature stages of fleas: eggs, larvae and pupae.

Long-Lasting

- ▼ Remains effective after bathing and swimming.
- ▼ Protects for 1 month.

Convenient

- ▼ Protection for puppies as young as 7 weeks of age.
- ▼ Unique, patented applicator makes it easy to use.

Keep your dog off the dinner menu with Vectra 3D.



Patented design makes application easy, clean and accurate.

The unique applicator makes it a snap to apply monthly parasite protection to your dog.

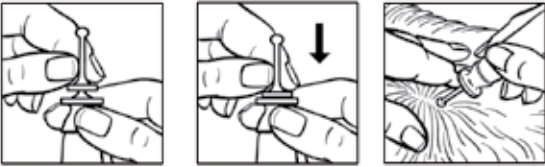
- ▼ **Easy does it:** The rounded tip minimizes risk of skin abrasions.
- ▼ **Hits the target:** Elongated tip makes it easy to reach your dog's skin through the hair coat.
- ▼ **One-piece simplicity:** Top disk pierces the seal when compressed – no need to remove the cap.
- ▼ **No drips:** Nothing comes out until you squeeze the tube.
- ▼ **Precision instrument:** Tested to ensure accurate dosing.



How to apply Vectra 3D®.

Before administering Vectra 3D for the first time, you should ask your veterinarian to demonstrate proper application technique.

1. **USE ONLY ON DOGS.** Do not use on cats or other animals.
2. Remove applicator from package.
3. The dog should be standing or in a comfortable position for easy application.
4. Holding the applicator tube upright, pointing away from face, place thumb and index finger around the applicator tip under the large disk. With other hand, grasp the stem of the applicator tip above smaller disk. Press down firmly on small disk until both disks meet, piercing the seal. See illustration.
5. Using the tip of the applicator, part the hair down to the level of the skin and slowly apply the product. Avoid superficial application to the dog's hair.



For dogs weighing 2.5 to 20 lbs

Apply the product to one spot, as shown on the left, onto the skin, squeezing the applicator tube until empty.



For dogs weighing 21–55 lbs OR 56–95 lbs

Apply the product evenly to three spots along the dog's back, beginning between the shoulder blades and continuing in the order shown in the diagram on the left, squeezing the application tube until empty.



For dogs weighing over 95 lbs

Apply the product evenly to four spots on the dog's back, beginning between the shoulder blades and continuing in the order shown in the diagram on the left, squeezing the applicator tube until empty.

The big chill doesn't always kill.

- ▼ Mosquitoes have adapted to survive in all climates, including the arctic.
- ▼ Adult fleas survive winter indoors, where they continue to infest pets.
- ▼ Ticks can survive temperatures below 32°F, and become active when temperatures rise.
- ▼ Sand flies can survive winter in a dormant state in animal burrows, deep cracks in walls and dark corners indoors.
- ▼ Mites can survive winter by continuing to feed on your dog.
- ▼ Long-haired dogs provide an ideal winter home for chewing and sucking lice.

Protect your dog year-round.

DISEASE DANGERS FOR YOUR DOG		
Fleas	<ul style="list-style-type: none">▼ Flea allergy dermatitis (FAD)▼ Anemia	<ul style="list-style-type: none">▼ Tapeworm disease▼ Tularemia▼ Bartonellosis
Ticks	<ul style="list-style-type: none">▼ Lyme disease▼ Ehrlichiosis▼ Rocky Mountain spotted fever	<ul style="list-style-type: none">▼ Babesiosis▼ Hepatozoonosis▼ Anaplasmosis▼ Tularemia
Mosquitoes	<ul style="list-style-type: none">▼ Heartworm disease	<ul style="list-style-type: none">▼ West Nile virus
Sand Flies	<ul style="list-style-type: none">▼ Leishmaniasis	
Lice	<ul style="list-style-type: none">▼ Severe dermatitis	<ul style="list-style-type: none">▼ Tapeworm disease
Mites	<ul style="list-style-type: none">▼ Profuse scaling dermatosis	

Where do they live and breed?

Fleas multiply wherever your dog goes: pillows, bedding, floors, furniture, carpets, etc.



Avoid tick-infested areas, especially wooded areas with heavy brush, shrubs, and grass.

Any container that can hold water can become a breeding ground for mosquitoes around your home.



Sand flies love clogged gutters, mulch, yard clippings, sewer drains, ditches and planters.

Lice may be spread by dog-to-dog contact and shared items.



Mites are highly contagious and may infest any area in the house.

Your veterinarian's advice is the answer.

Protecting your dog from hungry parasites is about protecting your dog's health. As your trusted animal healthcare expert, your veterinarian is the best source for accurate information about which treatment, dose and regimen is best for your dog. This is why Vectra 3D® is available only through licensed, practicing veterinarians.

When used monthly and combined with regular visits to your veterinarian, Vectra 3D can help you maintain the optimal health of your dog, and keep your household and family free from harmful parasites.



**For more information about Vectra®
please ask your veterinarian
or call 800-999-0297
or visit www.summitvetpharm.com.**

Vectra 
3D®

Please don't feed the parasites.