



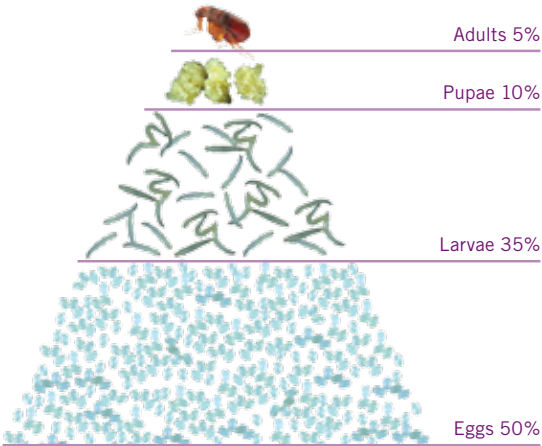
**There's a name for dogs
without fast-acting protection
from hungry fleas.**

Vectra 
for Dogs & Puppies™

Please don't feed the parasites.

A fast-multiplying problem.

Fleas are more than a nuisance. These blood-sucking parasites can actually cause and transmit diseases that can be serious or even fatal to your dog or puppy. You may think that a few little fleas aren't a big problem, but they can multiply very quickly. Did you know just one female can lay more than 25 eggs a day, which can add up to an infestation in no time. The best way to keep your dog, and your home, free of disease-carrying fleas is with monthly application of a topical that provides complete flea control protection.



The quick solution for your dog. Vectra for Dogs & Puppies™

Vectra® is a monthly topical flea control that provides continuous, long-lasting protection against all stages of fleas including eggs, larvae, pupae and adult. Applying it once a month all through the year prevents flea infestation, and can reduce the risk of disease transmission to your dog or puppy.

Fast-Acting

- ▼ Starts killing fleas within 2 hours.¹
- ▼ Protects against flea-borne diseases, including tularemia, rickettsiosis, bartonellosis and tapeworm.

Complete Flea Protection

- ▼ Protects dogs from ALL stages of fleas: adults, eggs, larvae and pupae for 1 month.
- ▼ Insect growth regulator that remains effective after exposure to sunlight.

Convenient

- ▼ Unique applicator makes applying Vectra easy, clean and accurate.
- ▼ A smart choice for dogs and puppies 8 weeks of age and older.¹

With Vectra®, your dog or puppy won't be the next meal for fleas.



Patented design makes application easy, clean and accurate.

The unique applicator makes it fast and easy to apply monthly flea protection to your dog.

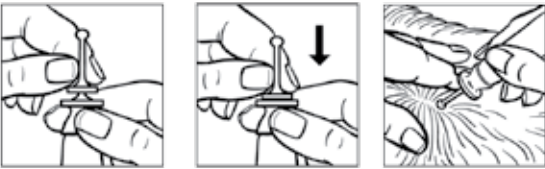
- ▼ **Easy does it:** The rounded tip minimizes risk of skin abrasions.
- ▼ **Hits the target:** Elongated tip makes it easy to reach your dog's skin through the hair coat.
- ▼ **One-piece simplicity:** Top disk pierces the seal when compressed – no need to remove the cap.
- ▼ **No drips:** Nothing comes out until you squeeze the tube.
- ▼ **Precision instrument:** Tested to ensure accurate dosing.



How to apply Vectra for Dogs & Puppies™ to your dog.

Before administering Vectra® for the first time, you should ask your veterinarian to demonstrate proper application technique.

1. **USE ONLY ON DOGS.** Do not use on cats or other animals.
2. Remove applicator from package.
3. The dog should be standing or in a comfortable position for easy application.
4. Holding the applicator tube upright, pointing away from face, place thumb and index finger around the applicator tip under the large disk. With other hand, grasp the stem of applicator tip above smaller disk. Press down firmly on small disk until both disks meet, piercing the seal. See illustration.
5. Using the tip of the applicator, part the hair down to the level of the skin and slowly apply the product. Avoid superficial application to the dog's hair.



For dogs weighing 2.5 to 10 lbs or weighing between 11–20 lbs, apply the product to one spot between the shoulder blades as shown.



For dogs weighing 21–55 lbs, apply the product evenly to three spots along the dog's back, beginning between the shoulder blades and continuing in the order shown in the diagram.



For dogs weighing 56–100 lbs, apply the product evenly to four spots on the dog's back, beginning between the shoulder blades and continuing in the order shown in the diagram.

Big, bad facts about tiny, terrible trouble.

The big chill doesn't always kill.

You may have thought that the thermometer was your friend when it comes to fleas. The facts may surprise you:

- ▼ Fleas can survive in colder climates. Fleas can survive indoors through the winter where temperatures are controlled.
- ▼ Pupae can remain dormant for several months, until conditions are ideal for them to emerge and survive as adult fleas.

Protect your dog year-round.

FLEA-RELATED DISEASE DANGERS FOR YOUR DOG	
Flea Allergy Dermatitis (FAD)	Inflammation, rash, severe itching, hair loss
Anemia	Pale gums, weakness
Tapeworm	Rough coat, weight loss
Skin infections	Inflammation, itching, sores, hair loss
Tularemia	Listless, fever, chills, sore muscles, coughing, vomiting
Bartonellosis	Skin lesions, fever, muscle and joint pain, coma
Rickettsiosis	Fever, sore muscles, nausea, vomiting

More disturbing details.

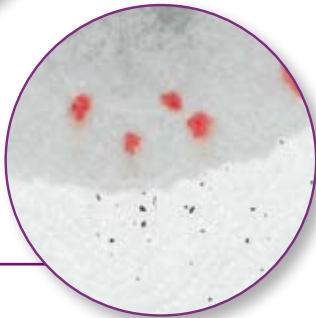
- ▼ Fleas multiply in your dog's bed, your bed, floors, furniture, closets, pillows, blankets, carpets, drapes and other dark corners of your house.
- ▼ Adult fleas are covered with little spikes that stick to fur, making them difficult to remove from the dog's hair coat.
- ▼ Adult fleas need blood to reproduce, which is why they bite your dog – or your family!

Flea eggs, larvae and pupae can be hiding almost anywhere



An adult flea can begin biting within seconds of jumping on your pet

Presence of flea dirt (tiny black particles that turn red when dropped on damp paper towel) could mean your dog has a flea problem



Your veterinarian's advice is the answer.

Protecting your dog from fleas is about protecting your pet's health. As your trusted animal health-care professional, your veterinarian is the best source for accurate information about which treatment, dose and regimen is best for your dog. This is why Vectra for Dogs & Puppies™ is available only through licensed practicing veterinarians. When used monthly and combined with regular visits to your veterinarian, Vectra for Dogs & Puppies can help you maintain the optimal health of your dog, and keep your household free from fleas and the serious diseases they may transmit.



For more information about Vectra®
please ask your veterinarian
or call **800-999-0297**
or visit www.summitvetpharm.com.

Vectra 
for Dogs & Puppies™

Please don't feed the parasites.